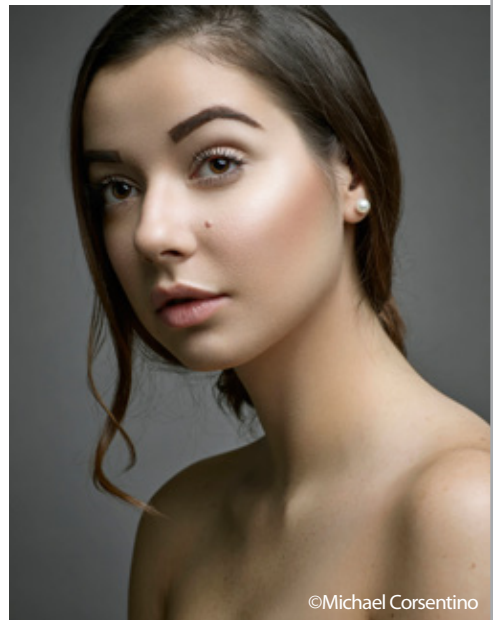


2015

 **Capture
Integration**
sales + rental guide



NATIONAL
877.217.9870

ATLANTA
404.522.7662

MIAMI
305.350.9900

NEW ENGLAND
603.413.6011

EMAIL
info@captureintegration.com

WEB
captureintegration.com

 **digitalback.com**

MEDIUM FORMAT + TECHNICAL CAMERAS + LIGHTING + 35MM DSLR

what our clients are saying

"I bought my first digital back from Capture Integration back in 2006 and since day one Dave and his staff have really gone the extra mile to take care of me. Austin is a small market and is really lacking in support for the photo industry. Because of this, I have come to rely on Capture Integration for so many things. They truly are a one stop shop for the high end segment of the photography market. They are a rental house, a photo school, tech support for everything, and a Phase One dealer all wrapped into one! Plus, they are doing it all better than everyone else!"

— Casey Dunn • Austin, TX

"Capture integration is the place I go to answer all my tech questions. They know the gear inside and out and how to mix and match equipment. I got real tired of walking into photo stores and getting a pitch to buy something for the sake of commission. Every time I leave Capture Integration, I have learned something new, and I also feel as if I have a lot to learn about my own gear. At the end of the day, what's the point of buying expensive equipment if you don't have a source that is leading the edge of what it is capable?"

— Dan Schultz • Atlanta, GA

"The approach at Capture Integration has certainly captured my admiration and respect – optimizing the system for the long term benefit of the client. It's a wake up call for many in the business on how to conduct business. Capture Integration, in my mind, is a benchmark. Truly, a very special and unique dynamic is evolving at Capture Integration."

— Al Vinjamur • Katonah, NY

Capture Integration's philosophy

"Committed to listening to the needs of our customers in a caring and professional manner backed by a passion for creating a world-class experience."

In 2004, Capture Integration was founded by Dave Gallagher with these simple business principles:

- Provide an unparalleled level of customer service
- Know your product better than anyone else in the field
- Give honest and ethical answers to questions that are in the best interest to the customer
- Only sell and support products that you believe in 100%
- Truly understand the words: Dedication, Integrity, and Partnership
- Make doing business with Capture Integration "easy"

These seem like basic ideas that, unfortunately, are missing in 99% of companies doing business in photographic retail. With these principles ingrained from the top down, it is easy to see how Capture Integration has had such success in such a short period of time. In September of 2010, Capture Integration was awarded the coveted "Phase One Partner of the Year" award for the second time in their short existence. Today, they are internationally recognized as the leader in their field and are the dealer of choice by the most demanding photographers from around the world. This small, dedicated team of experts, and the organization they are a part of, is used as the bench model of how business should be conducted in our new digital marketplace.



GENERAL INQUIRIES

info@captureintegration.com

ACCOUNTING

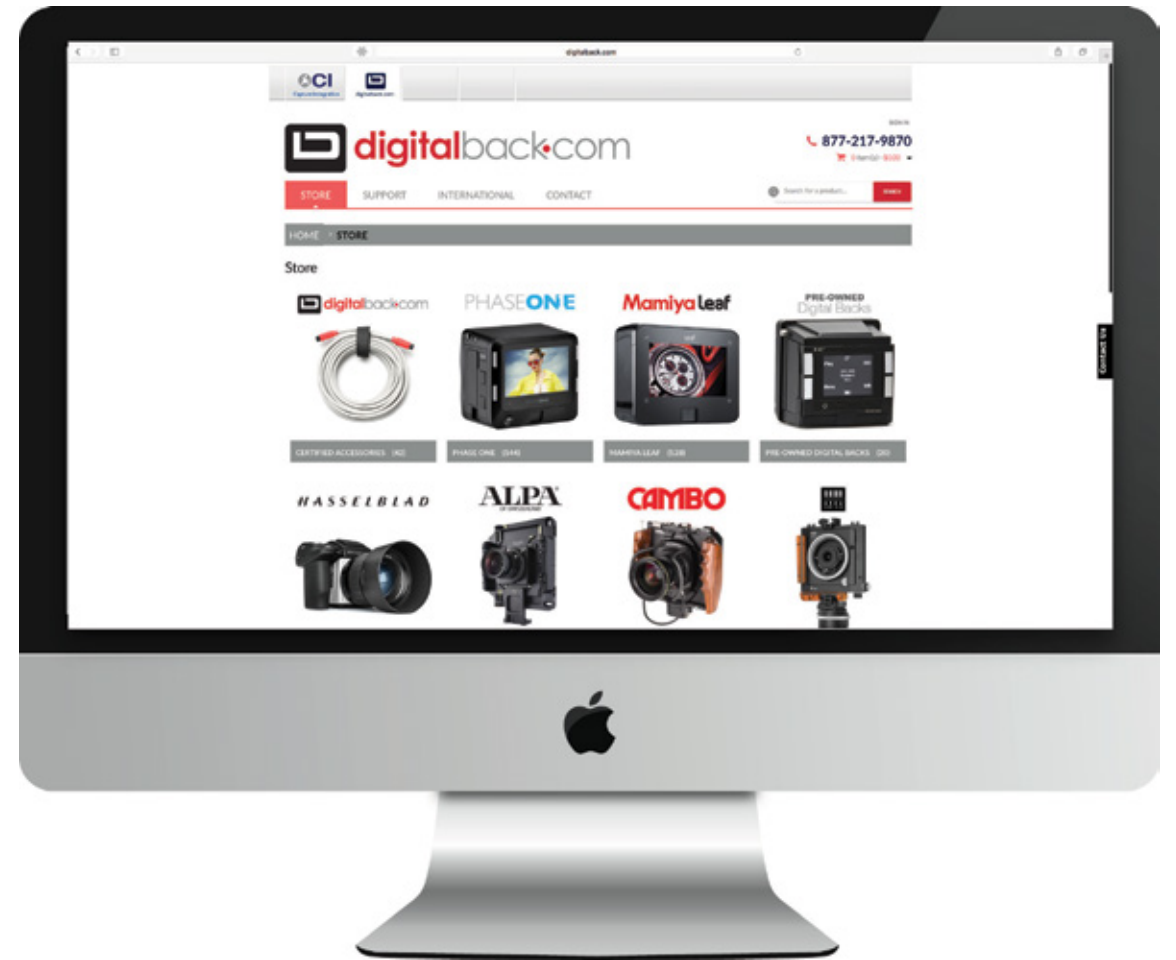
accounting@captureintegration.com

TECH SUPPORT

tech@captureintegration.com

NATIONAL RENTALS

rentals@captureintegration.com



Largest inventory of new and pre-owned digital backs in the world

In 2015, a business' e-commerce site is integral in the success of the company. For the last 2 years, Capture Integration has been working on broadening our company both physically and online. So today we are extremely excited to announce the introduction of our new online store, digitalback.com. Why digitalback.com? The new store states exactly what we do. We are the leaders in the digital medium format sales and support field worldwide. And we are putting mammoth efforts into pushing forward to make it easy to do business with us. We have some exciting offers only available online. Please take a look at our new site and offer us feedback.

- New + Pre-owned Digital Backs
- ALPA + Cambo in-stock
- Camera Bodies + Lenses
- Certified Medium Format Accessories
- Technical Cameras + Accessories
- Capture One Pro + Upgrades

sales

TEAM APPROACH

From its outset, Capture Integration has believed in the team approach. We believe a dedicated group with specialized training can solve your complex imaging needs better than a single individual can. We have assembled a team of energetic and enthusiastic consultants with a collective experience in professional photography solutions of over 200 years. We want to become an important partner in your business! Expand your business capabilities by relying on us for all of your projects and tap into the wealth of experience in our team.

EXPERIENCE

We have thousands of customers in our small marketplace. These customers call us and depend on us for their support. There aren't any problem situations that a photographer could encounter that we have not heard about already. Calling on Capture Integration as your photography consulting team will strengthen your company by finding effective solutions faster than you can on your own. Don't waste time struggling with an issue, searching online, or asking other photographers. Call us to solve these problems and have more time to get back to creating imagery. Isn't that the goal?

DEDICATED, PERSONALIZED, PRODUCT CONSULTING

In today's add to cart world, there is something missing from the buying experience. Buying from a box mover, you will not find someone who genuinely cares about what you do and who knows what solution is best for your use. Capture Integration was created to fill that void. Technology has exploded. There are more photographic choices today than ever. But there are subtle differences in these products with significant advantages and disadvantages that can impact your photography. Whether it is an extensive phone call, an exchange of emails, collaborative texts, or visiting one of our 4 locations for hands-on demonstrations, we will make the extra effort making sure you choose the best fitting solution that will contribute to your success.

IN-DEPTH KNOWLEDGE OF REAL WORLD EQUIPMENT PERFORMANCE

We don't work for the manufacturers, we work for you. This means you won't hear marketing hype or sales hyperbole from Capture Integration. Many products have variable performance in different situations that isn't reflected on data sheets. Many manufacturers overrate product capabilities. The only way to know a product's true performance is to use it and test yourself, and that is what we do long before we speak to our customers about any single product. We work with the world's most demanding photographers. Our years of experience working with our clients and supporting them have provided a tremendous depth of knowledge. Combined with our no-nonsense commitment to understanding technical expertise, you have an unbeatable team you can trust.

TESTING AND INSPECTION

Nothing is worse than purchasing or renting an expensive product, and having a problem right out of the box. We make the extra effort to make sure that doesn't happen. Capture Integration performs our own in-house testing. It is demanding. We extensively test pre-owned equipment before applying our CI Certification. We test and inspect rental equipment before and after rentals. We even go so far as to test and inspect new equipment that we receive from the manufacturers, before shipping to our clients. We don't leave our reputation in the industry to anyone else. Capture Integration has become the leader in our industry, and we are going to continue to work hard to earn that reputation for you.



©Jeffery Salter



©Ken Doo



©Michael Moore

our product lines

PHASEONE Mamiya leaf

Leica Canon HASSELBLAD

SONY CAMBO ALPA[®]
OF SWITZERLAND

Sinar⁺ PHOTOGRAPHY ARCA SWISS Profoto[®]

broncolor[®] CHIMERA[®] PERFECT LIGHTING HENSEL[®] PERFORMING LIGHT

Schneider KREUZNACH RODENSTOCK ZEISS

EIZO KUDO[™] VU[™] FILTERS

PocketWizard[™] TETHER TOOLS[™] INDURO[™]

TENBA[®] SEKONIC[®] x-rite

multiple time winner

PHASEONE partner of the year



©Juergen Frank



©Al Vinjamur



©Andrew Kornylak

Stand out in a big way

Introducing the XF Camera System



© David LaChapelle

www.phaseone.com

PHASEONE
what the world's best photography is made of



serious technical training



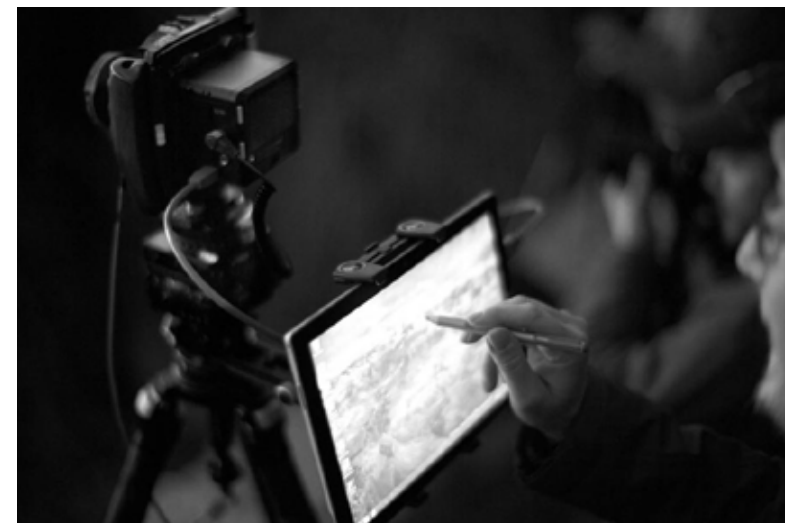
Our team of Capture One experts travels all over the map providing advanced Capture One Pro training. Come learn about the tips and tricks that will bring your workflow to the next level. This is serious technical training. Meet your local sales representatives and manufacturer representatives in respective cities, as well as play with new equipment, get your questions on digital medium format gear answered, and learn a solid foundation for Capture One Pro.

Most training classes focus on today's issues, software incompatibilities, and glitches. Our training goes beyond today and goes in-depth on the underlying technologies, design, strengths, and weaknesses of cameras from Phase One, Mamiya Leaf, Canon, Nikon and the Capture One software package. You'll leave with a deep understanding of the way this program works under the hood, so that you'll become a better troubleshooter.

To learn when the next Serious Technical Training will be in your town, visit: www.captureintegration.com/STT

workshops

Our Masters Series Workshops are a combination of the finest photographic equipment in the world, in the most gorgeous locations, with the talent of our most exceptional clients as instructors. To learn more about our upcoming workshops, please visit: www.captureintegration.com/company/events



Capture Integration Masters Series



how can we support you better?

In today's modern world, technology has brought people closer together. We strongly believe that knowledge, accessibility, and response are as important, if not more so, than physical proximity.

hardware tech

Capture Integration's commitment to our customers goes beyond the final sale invoice. Our combined decades worth of experience in on-set knowledge allows us to diagnose and pinpoint hardware problems quickly, from common cable or connection issues to in-house digital back shimming, and more. With all of our personal cell phone numbers listed on our website, and multi-time zone support before and after standard hours of operation; perfect for weekend or evening shoots. We constantly update our blog with in-depth articles showing intricacies of your gear that aren't available anywhere else, or test new products and share the results, sometimes before they're even available for purchase. We strive to be both a great support resource and an actively educating resource.

software tech

Our software support is second to none - built off our Serious Technical Training workshops and enhanced to a level of education that we know our customers demand. On top of the traveling series of workshops, we offer one-on-one screen sharing and software demonstrations. We offer personalized on-site and remote collaborative, real-time, learning environments and training for our clients. This allows you to learn the ins and outs of the software on your own images to match your own needs. Our team remains committed to testing and pushing the bounds of Capture One Pro and other software packages, ensuring any updated or new software matches our demanding standards before recommending it to any of our customers.

support vs. training



FOR TECHNICAL ISSUES

When things go wrong, we're here to help. We'll get you patched up, and back on your feet.



AVAILABLE BY EMAIL OR PHONE

When you need help, you're not alone. We're a phone call or an email away.



EXPECT THE UNEXPECTED

You can't plan problems - and why would you? We have the widest support 8am EST to 6pm PST.

ONE ON ONE TRAINING

Individualized, personalized training delivered over the interwebs in the comfort of your own space.



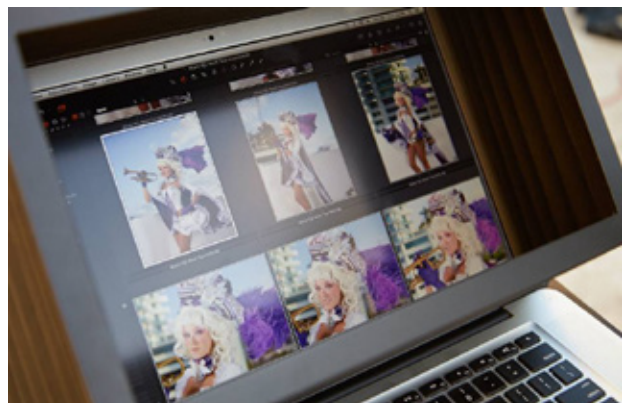
FOR LEARNING, NOT FIXING

Primary goal: Learning Capture One Pro. Anything else is icing on the cake.



SCHEDULED IN ADVANCE

Planning ahead delivers better results. Sessions are scheduled & rescheduled if needed.



customer profiles

ROBERT KERIAN

KERIANPHOTO.COM

I have been shooting large and medium format for so many years. First, it was 4x5, then a Pentax 6x7, then a Fuji-680. When the medium format sensors came out over 10 years ago, I dumped my cameras and got a Phase One P45+ back for the Contax 645 system. I still use the Contax as it has the sharpest glass. The Phase One IQ250 is the best back I have ever used. It has everything I need, and more. 14 stops dynamic range. Wi-Fi preview, the ability to tether while I shoot. The live view - it rocks. The cost of the IQ250 is worth every cent because it is a professional digital back, not a gimmick camera.



©Robert Kerian

DAN SCHULTZ

DANSCHULTZPHOTO.COM

When I started shooting on my IQ260, what changed for me? I felt like I needed to reshoot everything I had ever shot. But seriously, the resolution and massive raw file options in post have made my clients very excited that they are seeing their products in a completely different way. When I shoot the larger build-your-own shoots of Side X Side Vehicles (SXS) or Boats with accessories on them, I can zoom in at 100% and still have the resolution to make individual color adjustments on those specific items that my Canon 1DX could not possibly provide. The dynamic range has given me control over polished steel and aluminum products that I previously had to take multiple shots to achieve. It is also really nice that the images sizes are so large that you don't even have to think twice when the clients wants to print big.



©Dan Schultz

JOEY SEAWELL

JOEYSEAWELL.COM

It really is a game changer. I am ecstatic with the quality the new CMOS back is delivering. I shot with CCD backs and they were great for studio, but 80-85% of my work is in an environment and the CCD backs were not conducive for my type of workflow (because of the low light ability and slower response) so I would often leave the kit in the bag. I pre-ordered the IQ250 and it honestly is the only camera I use now. I love the depth and the richness of the images. It makes me very happy to achieve a very similar look that I would get from shooting 2 1/4 film but with the ease, immediacy and affordability of digital.

HOLGER OBENAU

HOLGEROBENAU.COM

Everything changed when I started using medium format. Looking back, I would go even further and say that it was the initiation to become a well-rounded photographer. It was the best and most important decision in my career. I love the dynamic range and I love the flexibility. Medium Format in combination with technical cameras made me slow down. I stopped relying on "automatic" or "autofocus". I don't want my camera to decide for me, I want to be in charge. Today I know my hyperfocal distances and I can literally "see" exposure times. Everything is second nature. It frees my mind to concentrate on the final result. I never liked being tied to one camera system. Phase One gave me the tools to expand further than I had initially thought would be possible.



©Holger Obenaus

local rentals

Local Atlanta & New England rental pickup rate is 25% OFF the listed rates

rental policies

POLICES + REQUIREMENTS INSURANCE OR CREDIT CARD

Before renting, you will need to make sure that we have your Certificate of Insurance on file. We will be happy to work with your insurance company on your behalf, in order to minimize the amount of effort required from you. If you prefer we can use a credit card, but only if there is enough available credit for the retail value of the equipment.

RENTAL PERIOD

You will be able to pick up your rental at 4pm on the day before your first paid day of rental. After the job, you will need to return the equipment to us by 10am on the following day. If you know you'll need more time before or after, please let us know and we will make accommodations whenever possible. Please call at least 24 hours in advance to schedule a time.

SHIPPING

We ship rentals nationwide using insured FedEx Priority Overnight or insured FedEx First Overnight; and begin charging the next day - when the equipment is in your hands. For example, if we ship the equipment on Monday it will arrive on Tuesday morning - Tuesday would count as a rental day, but Monday will not. The cost of shipping to the client is added to the rental invoice. The client is responsible for shipping the equipment back to Capture Integration to arrive before 10am the day after the rental. For instance, if the equipment is shipped back to our office on Wednesday and arrives Thursday before 10am, then Thursday is not charged as a rental day.

QUALITY ASSURANCE EXPERT SUPPORT

As the authorized dealer of Phase One, Mamiya Leaf, Alpa, Hasselblad, Leica, Canon, Eizo, Cambo and more - we aren't just renting equipment; we know the equipment inside and out. We are often called by rental companies when a problem arises they can't resolve. This support begins even before your rental starts. Our staff will be happy to provide basic training on any equipment you rent, either immediately before the rental, or at another pre-scheduled time. If you'd like more in-depth training we can include that as part of a rental package.

PROFESSIONAL EQUIPMENT

Every item is checked before rental to make sure it is clean and in top working condition. As dealers, we know what to look for to ensure the equipment won't fail on you.

TRY BEFORE YOU BUY PRO-RATED RENTAL REIMBURSEMENT

Capture Integration also sells all of the products listed in this brochure. Please feel free to use a rental as a way of evaluating a potential purchase in your real-world workflow. If you purchase after renting part of your rental will be credited toward your purchase:

- Within 1 week: 100% of your rental will be credited
- Within 2 weeks: 75%
- Within 3 weeks: 50%
- Within 4 weeks: 25%



©Sultan Ghahtani



©David Benoliel

same day delivery



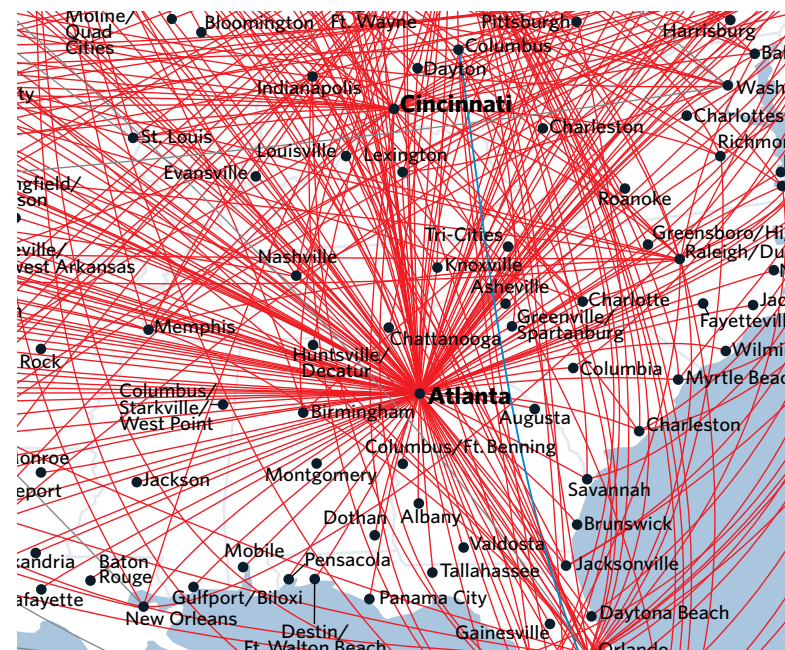
We are the only dealer that can provide same-day delivery. Did your lens go down on set? Do you need a back-up camera or cable? Capture Integration is a certified Delta Dash shipping agent - utilizing airport-to-airport service. We can deliver equipment same day - 100% guaranteed across the United States. DASH shipments have the highest boarding priority and fastest transit times of any Delta Cargo product.

100% Service Level Guarantee

Any city with Delta Cargo

Ship across the country within hours

We can save your job / client





medium format digital backs

PHASE ONE	RATE	RESOLUTION	ADVANTAGES
IQ3 80MP	\$775 / day	80MP	Full Frame, Wi-Fi, 1 Hour Exposures, Highest Resolution
IQ3 60MP	\$700 / day	60MP	Full Frame, Wi-Fi, 1 Hour Exposures
IQ3 50MP	\$675 / day	50MP	6400 ISO, Wi-Fi, Amazing Live View Focusing
IQ180	\$700 / day	80MP	Full Frame, Highest Resolution
IQ160	\$600 / day	60MP	Full Frame, Best Seller
IQ150	\$625 / day	50MP	6400 ISO, Amazing Live View
IQ140	\$500 / day	40MP	FW800/USB3, IQ GUI
P65+	\$500 / day	60MP	Highest Resolution P+
P45+	\$400 / day	39MP	1 Hour Exposures
P40+	\$300 / day	40MP	Entry-Level Digital Back

Mamiya leaf	RATE	RESOLUTION	ADVANTAGES
Credo 80	\$700 / day	80MP	Full Frame, Leaf ICC Color, Highest Resolution
Credo 60	\$600 / day	60MP	Full Frame, Leaf ICC Color
Credo 50	\$550 / day	50MP	6400 ISO, Leaf ICC Color, Amazing Live View
Credo 40	\$450 / day	40MP	FW800/USB3, Credo GUI

H A S S E L B L A D	RATE	RESOLUTION	ADVANTAGES
H5D-60	\$550 / day	60MP	Full Frame, True Focus II, Hasselblad System
H5D-50	\$450 / day	50MP	1.2x Crop, True Focus II, Hasselblad System
H5D-40	\$425 / day	40MP	1600 ISO, True Focus II, Hasselblad System
H4D-40	\$400 / day	40MP	1600 ISO, True Focus, Hasselblad System
CFV-50c	\$450 / day	50MP	6400 ISO, 34 Minute Exposure, Live View, Wi-Fi, V Mount

*DON'T SEE THE BACK YOU ARE LOOKING FOR? CONTACT US AT 877.217.9870

medium format bodies + lenses

PHASE ONE / MAMIYA 645 SYSTEM		
XF Body	Phase One	\$95 / day
645 DF+ Body	Phase One	\$75 / day
28mm f/4.5 Leaf Shutter	Schneider	\$60 / day
28mm D f/4.5	Phase One	\$60 / day
35mm f/3.5 Leaf Shutter	Schneider	\$60 / day
35mm D f/3.5	Phase One	\$45 / day
45mm D f/2.8	Phase One	\$45 / day
55mm f/2.8 Leaf Shutter	Schneider	\$55 / day
80mm D f/2.8	Phase One	\$35 / day
80mm f/2.8 Leaf Shutter	Schneider	\$45 / day
110mm f/2.8 Leaf Shutter	Schneider	\$55 / day
120mm f/4.0 Leaf Shutter	Schneider	\$60 / day
120mm D Macro f/4 Manual	Phase One	\$40 / day
120mm D Macro f/4 AF	Phase One	\$40 / day
120mm D f/5.6 Tilt-Shift	Schneider	\$40 / day

PHASE ONE / MAMIYA 645 SYSTEM		
150mm D f/2.8	Phase One	\$50 / day
150mm f/3.5 Leaf Shutter	Schneider	\$55 / day
240mm f/4.5 Leaf Shutter	Schneider	\$55 / day
40-80mm f/4.0-5.6 LS	Schneider	\$95 / day
75-150mm f/4.0-5.6 LS	Schneider	\$60 / day
75-150mm D f/4.5	Phase One	\$60 / day
210mm ULD f/4.0	Mamiya	\$50 / day
300mm f/4.5 APO	Mamiya	\$50 / day
105-210mm f/4.5	Mamiya	\$30 / day
Extension Tubes	Mamiya	\$20 / day
Hassey V Lens Adapter	Phase One	\$20 / day
Vertical Battery Grip Built-in PocketWizard	Phase One	\$30 / day
L-Bracket	Phase One	\$10 / day
RZ Adapter	Mamiya	\$20 / day

HASSELBLAD 645 SYSTEM (MODERN H SERIES)		
H5X Body w/ Prism Viewfinder	Hasselblad	\$95 / day
H4X Body w/ Prism Viewfinder	Hasselblad	\$75 / day
H2 Body w/ Prism Viewfinder	Hasselblad	\$45 / day
HCD 24mm f/4.8	Hasselblad	\$60 / day
HCD 28mm f/4.0	Hasselblad	\$60 / day
HC 35mm f/3.5	Hasselblad	\$50 / day
HC 50mm f/3.5	Hasselblad	\$50 / day
HC 80mm f/2.8	Hasselblad	\$40 / day
HC 100mm f/2.2	Hasselblad	\$65 / day
HC 120mm Macro f/4	Hasselblad	\$75 / day
HC 150mm f/3.2	Hasselblad	\$65 / day
HC 210mm f/4	Hasselblad	\$65 / day
HC 300mm f/4.5	Hasselblad	\$65 / day
HCD 35-90mm f/4.0-5.6	Hasselblad	\$60 / day
HC 50-110mm f/3.5-4.5	Hasselblad	\$75 / day
HTS 1.5 Tilt and Shift Adapter	Hasselblad	\$110 / day
Extension Tubes	Hasselblad	\$20 / day
Rechargeable Grip	Hasselblad	\$10 / day
CR123A Battery Grip	Hasselblad	\$10 / day

CONTAX 645 SYSTEM		
645 Body w/ Prism Viewfinder	Contax	\$60 / day
30mm f/3.5 Fisheye	Contax	\$30 / day
35mm f/3.5	Contax	\$50 / day
80mm f/2.0	Contax	\$35 / day
120mm Macro f/4	Contax	\$45 / day
Extension Tubes	Contax	\$30 / day
1.4x Teleconverter	Contax	\$30 / day

LEICA S SYSTEM		
S Body (Type 007)	Leica	\$400 / day
24mm f/3.5	Leica	\$90 / day
35mm f/2.5	Leica	\$90 / day
70mm f/2.5	Leica	\$90 / day
120mm Macro f/2.5	Leica	\$90 / day
180mm f/3.5	Leica	\$90 / day
30-90mm f/3.5-5.6	Leica	\$120 / day
Cable Release	Leica	\$20 / day
SF 58 Flash	Leica	\$20 / day
Vertical Grip	Leica	\$20 / day
Tether Cable	Leica	\$20 / day
Hasselblad H Lens Adapter	Leica	\$20 / day

technical cameras

CAMBO

WRS-600	\$175 / day
WRS-5000	\$150 / day
WRS-1250	\$125 / day
WRC-400	\$100 / day

CAMBO LENSES

23mm f/5.6 HR Digaron-S Rodenstock	\$125 / day
32mm f/4.0 HR Digaron-W Rodenstock	\$150 / day
35mm f/5.6 XL Apo-Digitar Schneider	\$75 / day
40mm f/4.0 HR Digaron-W Rodenstock	\$75 / day
50mm f/4.0 HR Digaron-W Rodenstock	\$75 / day
60mm f/5.6 XL Apo-Digitar Schneider	\$75 / day
70mm f/5.6 HR Digaron-W Rodenstock	\$75 / day
90mm f/5.6 HR Digaron-SW Rodenstock	\$75 / day
120mm f/5.6 ASPH N Apo-Digitar Schneider	\$75 / day
150mm f/5.6 N Apo-Digitar Schneider	\$75 / day

CAMBO ACCESSORIES

Kapture Group One Shot Cable	\$20 / day
Center Filters (23, 32, 35)	\$20 / day
Ground Glass with Loupe	\$20 / day
Compendium Hood	\$15 / day

CAMBO ACTUS

Actus (Includes 1 Camera + 1 Lensplate)	\$125 / day
Actus DB (Includes DB Interface + 1 Lensplate)	\$150 / day

CAMBO ACTUS LENSPLATES + ACCESSORIES

Copal 0 or Copal 1	\$10 / day
m39	\$10 / day
Leica R	\$10 / day
Hasselblad V	\$10 / day
Mamiya RZ / RB	\$10 / day
Mamiya 645 Pro TL	\$10 / day
Pentax 645	\$10 / day
Nikon F	\$10 / day
Canon EOS	\$10 / day
WRS to Actus Plate	\$10 / day
ALPA to Actus Plate	\$10 / day
Interface Plates for Actus DB	\$10 / day

CAMBO ACTUS CAMERA MOUNTS

Canon EOS	\$25 / day
Nikon F	\$10 / day
Leica M	\$10 / day
Micro Four-Thirds	\$10 / day
Sony E	\$10 / day
Fuji X	\$10 / day
300mm Rail + Bellows	\$10 / day

ALPA[®] OF SWITZERLAND

A-Series Kit w/ 35mm + 70mm	\$1,025 / day
12 FPS	\$200 / day
12 XY	\$200 / day
12 MAX	\$175 / day
12 SWA	\$150 / day
12 STC	\$150 / day
12 TC	\$125 / day

ALPA LENSES WITH HPF RING

23mm f/5.6 HR Alpagon Rodenstock	\$150 / day
32mm f/4.0 HR Alpagon Rodenstock	\$165 / day
35mm f/5.6 XL Apo-Digitar Schneider	\$95 / day
40mm f/4.0 HR Alpagon Rodenstock	\$95 / day
50mm f/4.0 HR Alpagon Rodenstock	\$95 / day
60mm f/5.6 XL Apo-Helvetar Schneider	\$95 / day
70mm f/5.6 HR Alpagon Rodenstock	\$95 / day
90mm f/5.6 HR Alpagon Rodenstock	\$95 / day
120mm f/5.6 Apo-Helvetar ASPH Schneider	\$95 / day
180mm f/5.6 T Apo-Digitar Schneider	\$95 / day

ALPA ACCESSORIES

3D Micro Leveling Head	\$40 / day
Sync Solution	\$35 / day
Viewfinder	\$35 / day
iPhone Holder	\$20 / day
Tilt/Swing Adapter 0° - 5°	\$20 / day
Interface Plates Mamiya, Hass. H, Hass. V, Contax	\$20 / day
Center Filters (23, 32, 35)	\$20 / day
Bubble Level	\$10 / day

ALPA FPS ACCESSORIES

Canon Lens Mount	\$25 / day
Nikon Lens Mount	\$25 / day
Contax Lens Mount	\$25 / day
Mamiya Lens Mount	\$20 / day
Hasselblad V Lens Mount	\$20 / day
Hasselblad HC Lens Mount	\$25 / day
Hasselblad HC Lens Stitch	\$50 / day
Contax Lens Stitch	\$50 / day
WIFI Adapter	\$5 / day

OUR SUPPORT TECHNICIANS ARE
FACTORY-TRAINED BY BOTH
ALPA AND CAMBO.



Manufacturers of remarkable cameras
www.alpa.ch

ALPA[®]
OF SWITZERLAND

rodenstock + schneider lenses

LENS FOCAL LENGTH	OPTIMAL APERTURE	LENGTH	WEIGHT	MIN. FOCUS	ANGLE	FILTER SIZE	IMAGE CIRCLE f/11
Rodenstock 23mm f/5.6 HR Digaron-S	f/5.6 - f/8	89.6 mm	580 grams	0.25 m	112°	72 mm	70 mm
Schneider 24mm f/5.6 Apo-Digitar XL	f/5.6 - f/11	38 mm	205 grams	0.2 m	100°	52 mm	60 mm
Rodenstock 28mm f/4.5 HR Digaron-S	f/5.6 - f/8	105.5 mm	830 grams	0.3 m	101°	72 mm	70 mm
Schneider 28mm f/4.5 APO SuperDigitar XL	f/5.6 - f/11	73.3 mm	899 grams	0.57 m	115°	95 mm	90 mm
Rodenstock 32mm f/4.0 HR Digaron-W	f/5.6 - f/8	113.2 mm	795 grams	0.4 m	107°	86 mm	90 mm
Schneider 35mm f/5.6 Apo-Digitar XL	f/5.6 - f/11	44 mm	190 grams	0.3 m	102°	52 mm	90 mm
Rodenstock 35mm f/4.5 Apo-Sironar	f/8 - f/11	58.8 mm	220 grams	0.4 m	111°	67 mm	105 mm
Rodenstock 35mm f/4.0 HR Digaron-S	f/5.6	80.4 mm	480 grams	0.4 m	90°	67 mm	70 mm
Rodenstock 40mm f/4.0 HR Digaron-W	f/5.6 - f/8	96.4 mm	530 grams	0.5 m	94°	67 mm	90 mm
Schneider 43mm f/5.6 Apo-Digitar XL	f/5.6 - f/11	54 mm	350 grams	0.5 m	90°	58 mm	115 mm
Rodenstock 45mm f/4.5 Apo-Sironar	f/8 - f/11	70.5 mm	350 grams	0.6 m	107°	67 mm	115 mm
Schneider 47mm f/5.6 Apo-Digitar XL	f/8 - f/11	54.7 mm	250 grams	0.5 m	100°	52 mm	115 mm
Rodenstock 50mm f/4.0 HR Digaron-W	f/5.6 - f/8	98.4 mm	550 grams	0.7 m	84°	67 mm	90 mm
Rodenstock 55mm f/4.5 Apo-Sironar	f/8 - f/11	73.8 mm	400 grams	0.9 m	95°	67 mm	115 mm
Rodenstock 60mm f/4.0 HR Digaron-S	f/5.6	57.6 mm	240 grams	0.7 m	60°	49 mm	70 mm
Schneider 60mm f/5.6 Apo-Digitar L	f/5.6 - f/11	68.6 mm	400 grams	0.75 m	90°	62 mm	115 mm
Rodenstock 70mm f/5.6 HR Digaron-W	f/5.6 - f/8	72.8 mm	340 grams	0.8 m	70°	58 mm	100 mm
Schneider 72mm f/5.6 Apo-Digitar L	f/5.6 - f/11	36.4 mm	171 grams	1.1 m	62°	40.5 mm	90 mm
Schneider 80mm f/4.0 Apo-Digitar N	f/5.6 - f/11	42.6mm	205 grams	1.2 m	59°	40.5 mm	90 mm
Schneider 90mm f/4.5 Apo-Digitar N	f/4.5 - f/11	48.7mm	230 grams	1.5 m	53°	40.5 mm	90 mm
Rodenstock 90mm f/5.6 HR Digaron-S	f/8 - f/11	82 mm	460 grams	0.6 m	70°	67 mm	125 mm
Rodenstock 90mm f/5.6 HR Digaron-SW	f/5.6 - f/11	107 mm	680 grams	0.6 m	67°	72 mm	115 mm
Schneider 100mm f/5.6 Apo-Digitar N	f/5.6 - f/11	42.3 mm	200 grams	1.8 m	53°	40.5 mm	100 mm
Rodenstock 100mm f/4.0 HR Digaron-S	f/5.6	73.4 mm	370 grams	1.8 m	39°	58 mm	70 mm
Rodenstock 105mm f/5.6 Apo-Sironar	f/8 - f/11	48.6 mm	170 grams	1.8 m	62°	49 mm	125 mm
Schneider 120mm f/5.6 Apo-Digitar N	f/5.6 - f/11	41.8 mm	255 grams	1.2 m	48°	40.5 mm	120 mm
Schneider 120mm f/5.60 ASPH. Digitar N	f/5.6 - f/11	42.3 mm	291 grams	1.2 m	60°	46 mm	110 mm
Rodenstock 120mm f/5.6 Apo-Sironar Macro	f/8 - f/11	49.8 mm	220 grams	1:5 - 2:1	55° - 24°	49 mm	150 mm
Rodenstock 135mm f/5.6 Apo-Sironar	f/8 - f/11	53.6 mm	240 grams	3.0 m	58°	49 mm	150 mm
Schneider 150mm f/5.6 Apo-Digitar N	f/5.6 - f/11	71.2mm	345 grams	1.65 m	40°	40.5 mm	110 mm
Rodenstock 150mm f/5.6 Apo-Sironar	f/8 - f/11	57.4 mm	250 grams	3.5 m	53°	49 mm	150 mm
Schneider 180mm f/5.6 Apo-Digitar T	f/8 - f/11	65 mm	293 grams	2.2 m	37°	55 mm	120 mm
Rodenstock 180mm f/5.6 Apo-Sironar	f/8 - f/11	65.2 mm	410 grams	5.0 m	45°	67 mm	150 mm
Rodenstock 180mm f/5.6 HR Digaron-S	f/5.6 - f/8	90.3 mm	425 grams	5.0 m	25°	67 mm	80 mm
Schneider 210mm f/6.8 Apo-Digitar T	f/5.6 - f/11	74.3 mm	420 grams	2.9 m	32°	72 mm	120 mm

Data Compilation Courtesy of Steve Hendrix



CAMBO CAMERA SYSTEM FOR PHASE ONE, MAMIYA LEAF + DSLR BODIES

X-2 View Camera System	\$100 / day
Mount for Phase One Body	\$20 / day
Mount for Canon DSLR Body	\$20 / day
Mount for Nikon DSLR Body	\$20 / day
RZ Lens Mount	\$20 / day
Hasselblad Lens Mount	\$20 / day
Schneider / Rodenstock Large Format Lens Mount	\$20 / day

VIEW CAMERA LENSES

47mm f/5.6 Digitar XL Schneider	\$40 / day
75mm f/5.6 Rodenstock	\$40 / day
90mm f/5.6 Sinaron Sinar	\$40 / day
120mm f/5.6 ASPH Schneider	\$40 / day
135mm f/5.6 Rodenstock	\$40 / day
150mm f/5.6 Sinaron Sinar	\$40 / day
180mm f/5.6 HR-Digaron-S Rodenstock	\$40 / day

CAMBO ULTIMA

Ultima 4x5	\$75 / day
Ultima 2x3 Front & Rear Standard	\$75 / day
Sliding Back for Phase or Leaf Digital Back	\$75 / day
Standard Bellows	\$25 / day
Bag Bellows	\$25 / day
Compendium Shade	\$25 / day



ARCA-SWISS 6x9 FOR MEDIUM FORMAT BACKS

M-Line Monolith	\$75 / day
Sliding Back for Phase or Leaf Digital Backs	\$75 / day
C1 Cube	\$45 / day
Adapter Board	\$25 / day
Standard Bellows	\$25 / day
Bag Bellows	\$25 / day
Compendium Shade	\$25 / day
Kapture Group One Shot Cable	\$20 / day



Cambo ACTUS Mini View Cameras



The Cambo **ACTUS** is a new technology camera system designed for mirrorless cameras, such as the Sony Alpha 7 series & Fuji-X and available for Canon & Nikon DSLRs. It combines traditional view camera techniques with the latest capture technology.

The Cambo **ACTUS-DB** is a new technology camera system, evolved from the ACTUS series for mirrorless cameras and DSLR's. ACTUS-DB is specifically targeted at the use of Digital Backs from Phase One, Mamiya Leaf and Hasselblad.



WRS-5000



WRS-1200



WRC-400

Capture Integration is the top USA reseller for Cambo photography equipment. We always stock Cambo's latest cameras, lenses, and accessories. View the full line at www.digitalback.com

canon bodies, lenses + flashes

BODIES		
5DS Body	Canon	\$150 / day
5DS R Body	Canon	\$150 / day
1Ds III Body	Canon	\$125 / day
1D X Body	Canon	\$125 / day
5D III Body	Canon	\$115 / day
6D Body	Canon	\$75 / day
PRIME LENSES		
14mm f/2.8L II	Canon	\$40 / day
15mm f/2.8 Fisheye	Canon	\$30 / day
24mm f/1.4L II	Canon	\$30 / day
28mm f/2.8	Leica	\$15 / day
35mm f/1.4L	Canon	\$30 / day
50mm f/1.2L	Canon	\$40 / day
85mm f/1.2L II	Canon	\$80 / day
100mm Macro f/2.8L	Canon	\$50 / day
135mm Macro f/2.0L	Canon	\$60 / day
400mm f/2.8L	Canon	\$115 / day
ZOOM LENSES		
16-35mm f/2.8L II	Canon	\$30 / day
24-70mm f/2.8L II	Canon	\$40 / day
24-105mm f/4L IS	Canon	\$30 / day
70-200mm f/2.8L IS II	Canon	\$50 / day
100-400mm f/4.5-5.6L IS	Canon	\$50 / day

ZEISS LENSES		
21mm f/2.8	Zeiss	\$35 / day
28mm f/2	Zeiss	\$35 / day
35mm f/2	Zeiss	\$35 / day
50mm f/1.4	Zeiss	\$35 / day
85mm f/1.4	Zeiss	\$35 / day
100mm f/2	Zeiss	\$35 / day
TILT-SHIFT LENSES		
17mm Tilt-Shift f/4 L	Canon	\$65 / day
24mm Tilt-Shift f/3.5 II	Canon	\$65 / day
45mm Tilt-Shift f/2.8	Canon	\$40 / day
ACCESSORIES		
Petzval 85mm f/2.2 Lens Canon Mount (Brass)	Lomography	\$55 / day
Leica Lens Adapter	Canon	\$30 / day
Hasselblad V Adapter	Canon	\$30 / day
Lensbaby II w/ Zoom, Wide Angle + Macro	Canon	\$25 / day
Speedlite Transmitter	Canon	\$20 / day
5D III Battery Grip	Canon	\$10 / day
Spare Battery	Canon	\$5 / day
FLASHES + FLASH ACCESSORIES		
600 EX RT	Canon	\$35 / day
580 EX II	Canon	\$25 / day
Plus III	PocketWizard	\$25 / day
PocketWizard TT1	PocketWizard	\$20 / day
PocketWizard TT5	PocketWizard	\$20 / day



Mamiya Leaf

LEAF CREDO // The Leader in Speed + Image Quality
available in 40, 50, 60 and 80 megapixel sensors



The Leaf Credo series of digital camera backs deliver legendary Leaf image quality along with speed and versatility that are second to none. All Leaf Credo digital backs deliver exciting features including a 3.2" high resolution (1.15MP), bright touch LCD with a viewing angle of 170° to elegantly display detailed images.

www.mamiyaleaf.com/credo.html



© Karolina Henke

THE PROFOTO B1 WITH TTL WITHOUT CORDS

The Profoto B1 makes it easier than ever to use your flash off camera.

TTL achieves your light in an instant. With battery-power/without cords, the 500w/s B1 goes wherever you go. Combining performance and the legendary Profoto light shaping system the B1 makes great light easy.

To learn more go to www.profoto.com/offcameraflash



Profoto
The Light Shaping Company™

Profoto US | 220 Park Avenue, Florham Park NJ 07932 | PHONE (973) 822-1300, profoto.com/us



FOCUSING ON THE ESSENTIAL



LEICA **S** (TYPE 007)



LEICA **M** (TYPE 240)

THE FINEST IMAGE QUALITY WHEN SPEED MATTERS

- Compact, fast and the most versatile medium format camera on the market
- Outstanding image quality with 4K video
- Full S-System lens lineup with central shutter options to 1/4000 sec.
- Simple operations with built-in WiFi and GPS

BEST IN CLASS IMAGE QUALITY

- Outstanding Leica MAX CMOS 24MP full-frame sensor
- Extended applications with Live View
- "Leica Look" HD 1080 video
- Legendary Leica M-System lenses from 18mm to 135mm



sinar
PHOTOGRAPHY

Fine Swiss manufacturer of photographic solutions for large format applications when precision and performance matter most. The Sinar professional product portfolio consists of products for studio work, reproduction, landscape and architecture. There is a complete Sinar solution for all of your needs.

